

You can become a wear partner

There are four levels of partnership available each with different benefits.

For further information on what suits you and your organisation please contact:

Dr Hein Daanen
(Chairman of CODATA task group)
Email: hein.daanen@TNO.NL

FOR MORE INFORMATION:

Website :<http://ovrt.nist.gov/projects/wear>

Contact:
Email: wearinfo@tudelft.nl

Dr Kath Robinette
(USA)
Email: kathleen.robinette@wpafb.af.mil

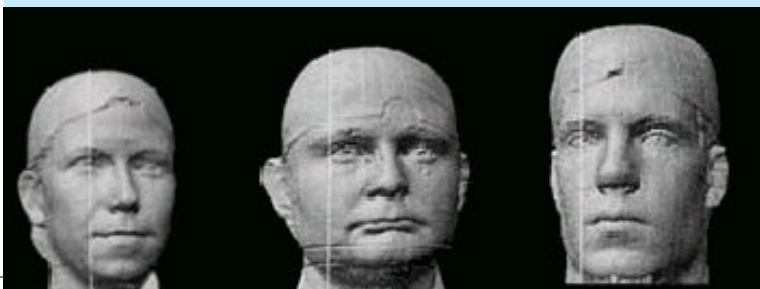
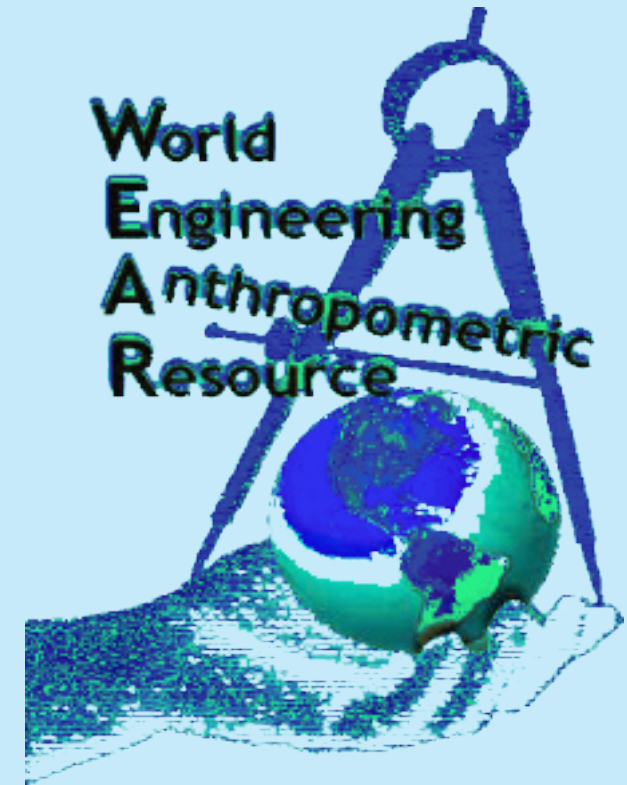
Dr Hein Daanen
(Chairman of CODATA task group)
(The Netherlands)
Email: hein.daanen@TNO.NL

Ms Flavia Pastura
(Brazil)
Email: flaviach@int.gov.br

Ms Lorraine Mac Duff
(South Africa)
Email: lorraine@ergotech.co.za

For information about WEAR and the Anthropometric Resource Australia SIG (ARASIG – a Special Interest Group of the Human Factors and Ergonomics Society of Australia Inc.)

contact:
Ms Daisy Veitch
(Australia)
Email: daisy@sharpdummies.com.au
Tel: +61 8 8370 0202



WHO?

A group of interested experts involved in the application of anthropometry data for design purposes. The members and partners are from around the globe.

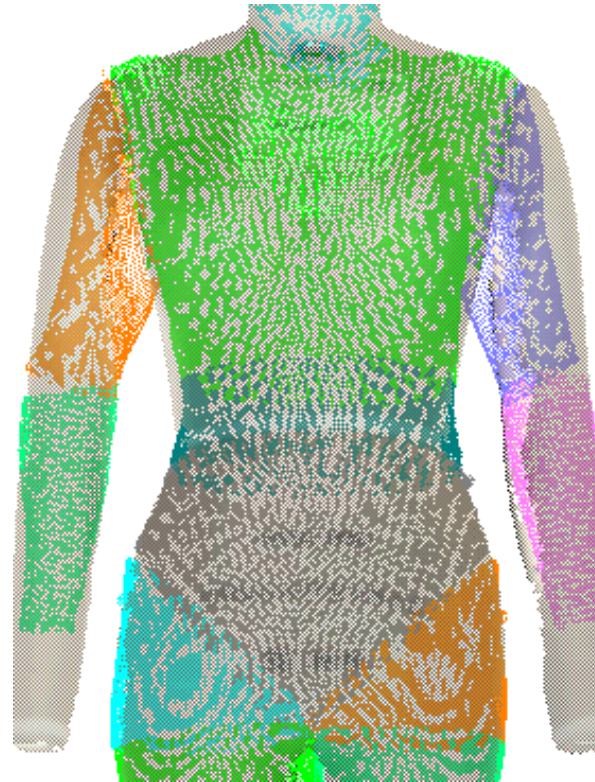
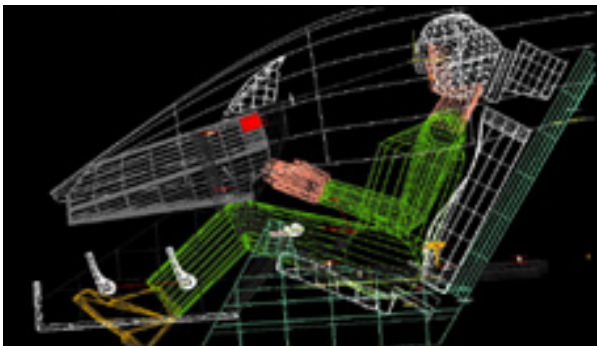
WHAT?

World Engineering Anthropometry Resource (WEAR)

WEAR is a non-profit organisation registered in Europe.

Vision

1. Describe the parameters of a world-wide, web-based anthropometric resource.
2. Build an engineering anthropometric resource that
 - is accessible to users of different levels and numbers
 - provides access to accurate and current datasets
 - provides quick access and a platform for analysis
 - provides tools to store, search, retrieve and analyse data
 - provides material on educating the user on the analysis and application of anthropometric data for design purposes



WHY?

Status Quo of anthropometric databases

- Time consuming and costly to find, access and analyse appropriate reliable data for design query
- Raw data often not available
- Often only summary statistics are published
- International sources of data are not always known
- Quality of data cannot be always be assured
- Analysis tools and knowledge of their appropriate use may be limited to a few experts

APPLICATIONS

- Product design
- Clothing design and size allocation
- Footwear and headgear design and sizing
- Furniture design
- Workstations and workspaces
- Evaluation of the accommodation of a user population
- Personal protective equipment
- Vehicles

